

[LE-580FX TAP Mode Utility]

2009/07/15

Purpose of this document:

Introducing the procedure to setup LE-580FX for Ethernet TAP between 2 target devices with WireShark. Other third party software can also work in the same way.

Use LE-580FX TAP Mode Utility if one or two of target devices only support Media Type in forced mode (ex: only support forced 100M Full duplex or forced 10M Full duplex). It is necessary to follow setup procedure in this document in order to make sure both target devices can link with LE-580FX correctly.

Please note: Do not use with “LE-580FX Window” and “LE-580FX QoS”.

Setup Procedure:

Step 01: Check Media Type capabilities of 2 target devices for Ethernet TAP.

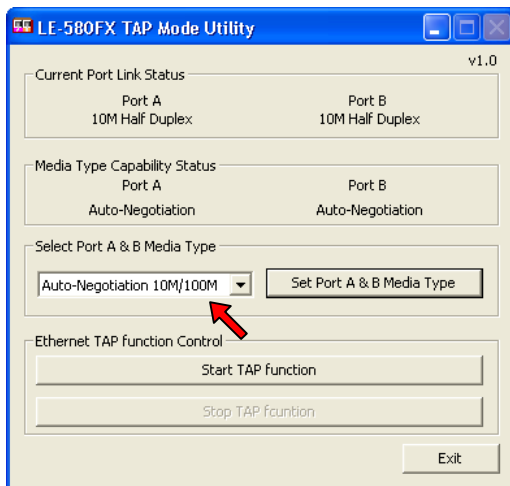
Step 02: Connect LE-580FX to PC. And, connect 2 target devices to LE-580FX.

Please note, if one of target devices is Forced device and the other is Auto-Negotiation device, please connect Forced device to Port A and Auto-Negotiation device to Port B.

Step 03: On PC, run **LE-580FX TAP Mode Utility**

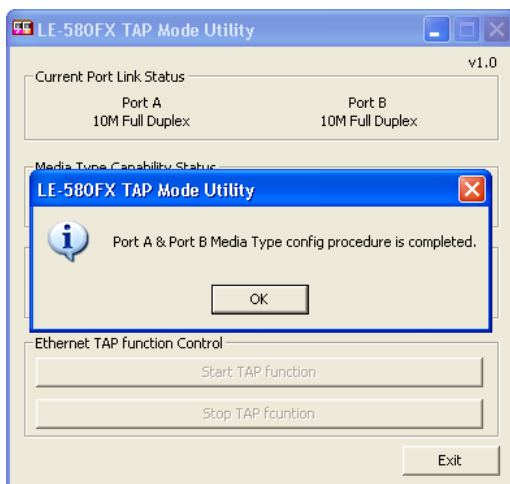
Step 04: Select Media Type capabilities base on result checked at Step 1.

And, click Set Port A & B Media Type button.

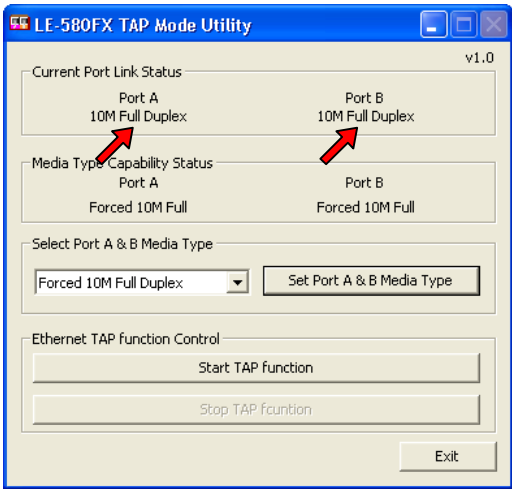


Please note, if the selection is invalid selection, 2 target device can not link with each.

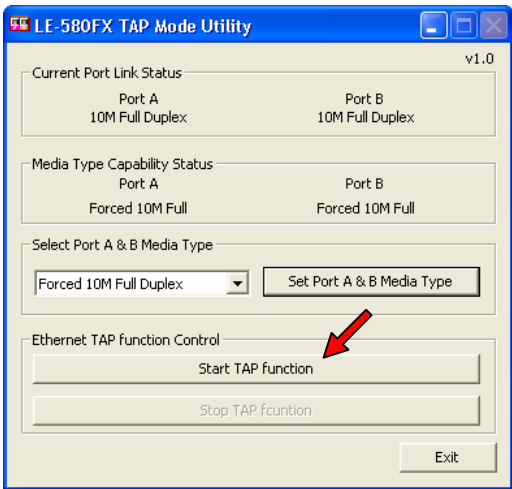
Step 05: A notification window will pop up when Media Type capacities of target device are set to LE-580FX. Click OK to continue.



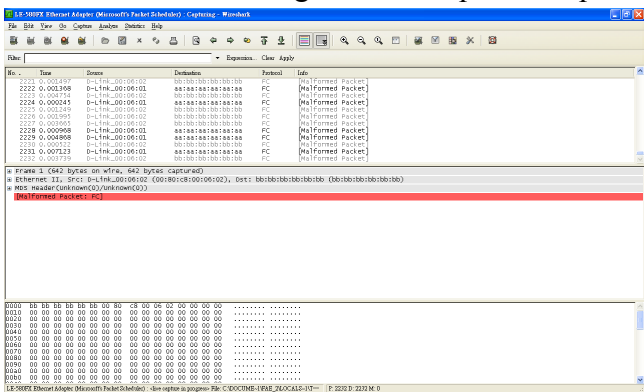
Step 06: Check the link status of 2 target device and LE-580FX port A and B.
Make sure the link status of all ports are linked at expected mode.



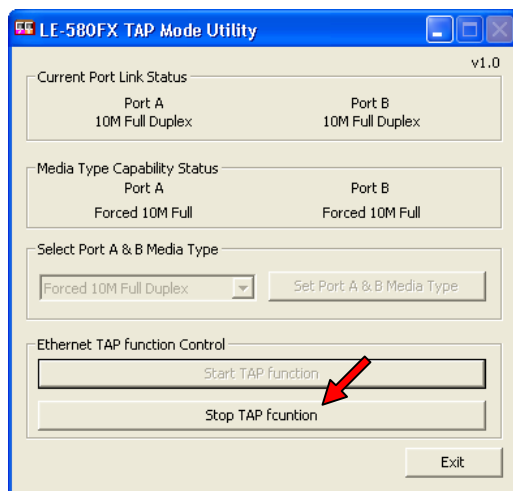
Step 07: Click Start TAP function button to enable LE-580FX TAP function.



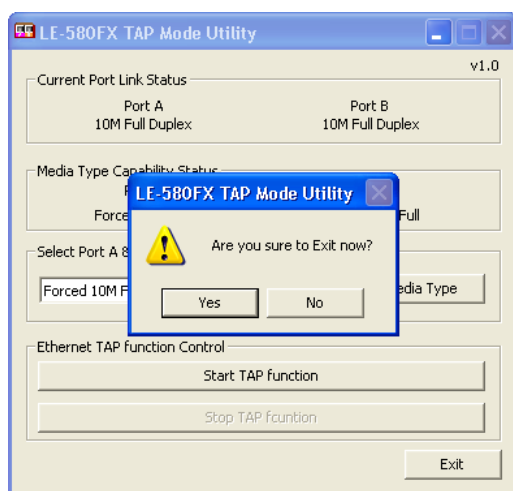
Step 08: Run WireShark and begin Ethernet packet capture.



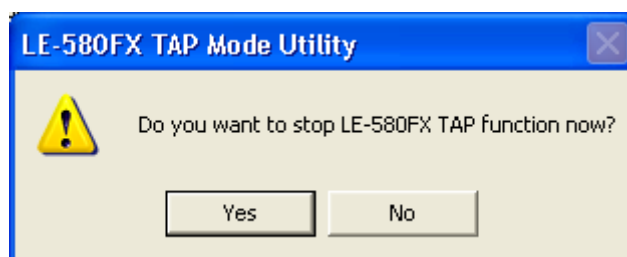
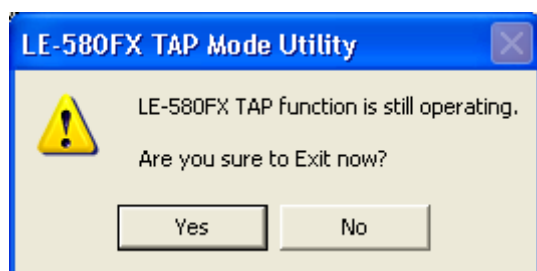
Step 09: When packet capture is no longer required, click Stop TAP function.



Step 10: Click Exit and then click Yes at the notification window to terminate LE-580FX TAP Mode Utility.



Note 01: If user click Exit for terminating program when LE-580FX TAP function is still operating, the program will pop out window for double-check and ask user to decide to stop TAP function or not.



Note 02: Ethernet packets that have Source MAC Address 00:00:ff:ac:00:00 and 11:11:11:11:11:11 are used by LE-580FX for communicating with PC. User may capture those packets when using LE-580FX TAP function. Those packets can be ignored by user directly.

System Requirements

OS: Window XP/Vista (32bit version)

LE-580FX firmware version 1.7 or above

WinPcap: Ver4.0.2

Version Histroy

2009/07/15: First Release of LE-580FX TAP Mode Utility (Version:v1.0)